



## Horus RE Agency

AGENCY — CASTELFRANCO EMILIA

PERGINE VALSUGANA — TN

Ischia di Pergine, a year-round view like this: inhabiting the beautiful lakefront

€ 720.000

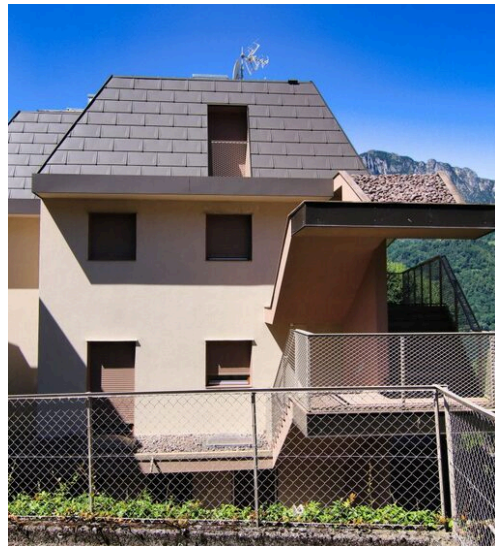
PRICE

205 m<sup>2</sup>

SQUARE METRES

0

ROOMS



## DESCRIPTION

# Ischia di Pergine, a year-round view like this: inhabiting the beautiful lakefront

It is a warm August day, and the sun is already shining high above Trento when I get on my bike. The morning air is still pleasantly fresh, and the quiet streets of the city seem to gently accompany me on a little adventure. The final destination is a special home, in Ischia, a quiet hamlet of Pergine Valsugana. But first, a rejuvenating stop is a must: Lake Caldonazzo. Pedaling along the valley is pure pleasure. Fields flow to the sides, mountains frame the horizon, and the thought of soaking in the cool waters of the lake makes me forget all fatigue. Arriving in Caldonazzo, I cannot resist: I leave my bike in the shade of a tree and dive in. The water is clear, cool, invigorating. A moment of absolute peace. There, floating and gazing at the clear sky, I think about how lucky people are who can live every day surrounded by such beauty. After the swim and a short stop, I resume the route. The road climbs a bit, but the view that opens up as I approach Ischia repays any effort. And there it is, the house a small, recently built building. What I will see is a splendid apartment

occupying the top two floors and spread over two levels, completely free on all four sides, dominating the landscape with discreet elegance. From every window you can admire something different: the blue of the lake, the green of the picturesque village, the imposing mountains or the meadows that surround the area. The apartment is still to be completed inside, and that is precisely its charm: it offers the freedom to choose every detail, to shape a space that fully reflects one's own taste and style. The finishes, which are fully customizable, allow you to create a unique environment, modern or traditional, minimal or rich in warmth. The building, consisting of only three apartments, is refined and elegant. The stately elevator, the common areas embellished with porphyry slabs, and the care in architectural details make it an exclusive and welcoming place. All around, the green meadows, above, the deep blue sky. The proximity to Pergine and Trento makes this house the ideal choice for those seeking tranquility without sacrificing the convenience of services...

 **205 m<sup>2</sup>**  
AREA

 **0**  
ROOMS

 **2**  
BATHROOMS

 **€ 720.000**

## FEATURES



Horus RE Agency

## CONTACTS

### Book a visit

Contact us for more information or to schedule a viewing.



PHONE

+39 0461 1636639



EMAIL

info@horus-re.com



ADDRESS

Corso Martiri 173, Castelfranco Emilia, Mo